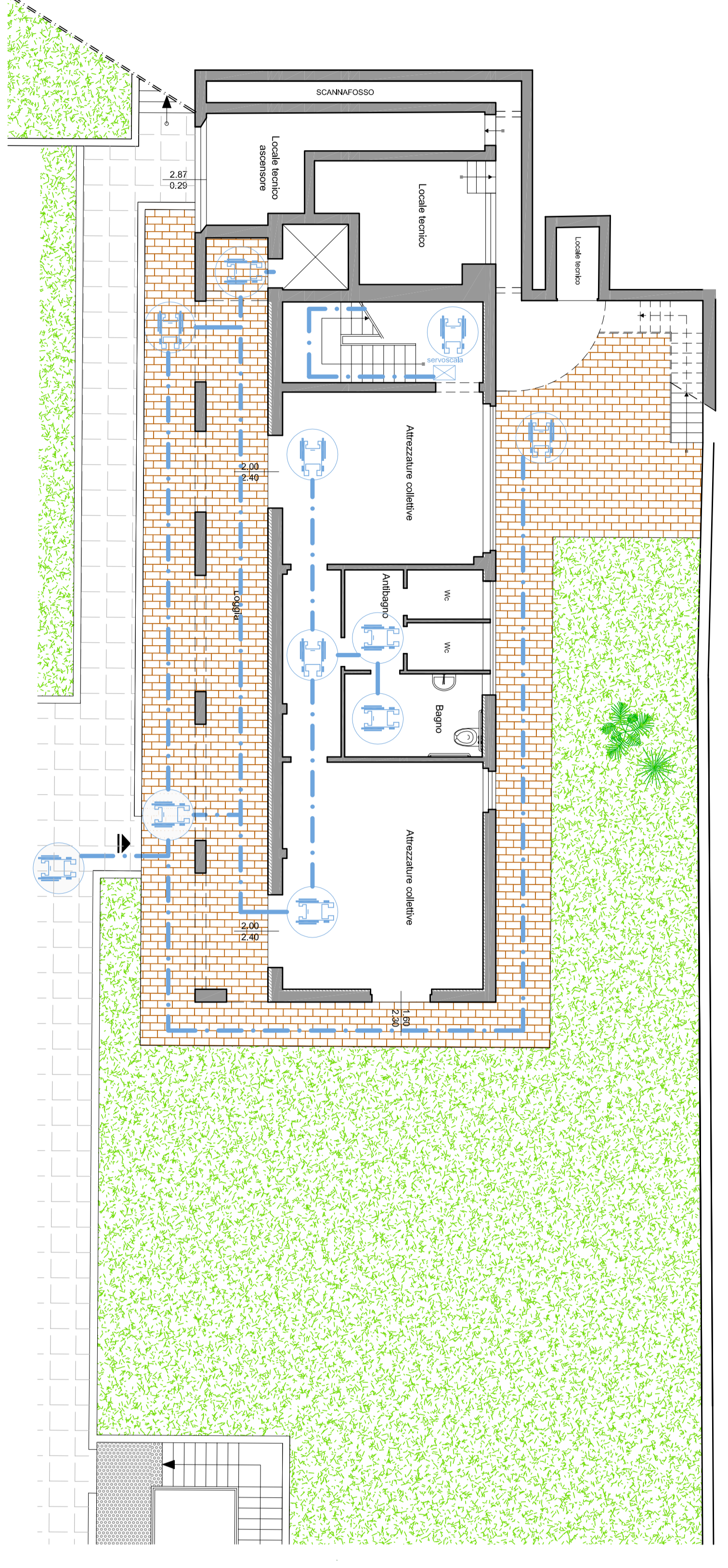


Progetto: RIQUALIFICAZIONE EX-ARBA ENEL
 Proprietà: ENER S.p.A.
 Comune di: SAN GIUGLIANO VAL DI PISA -
 Via Aschili Grandi nr. 52, 54, 56, 58
 Edificati grafici: VERIFICA LEGGE 13/79
 - EDIFICIO "A"
 - EDIFICIO "B"

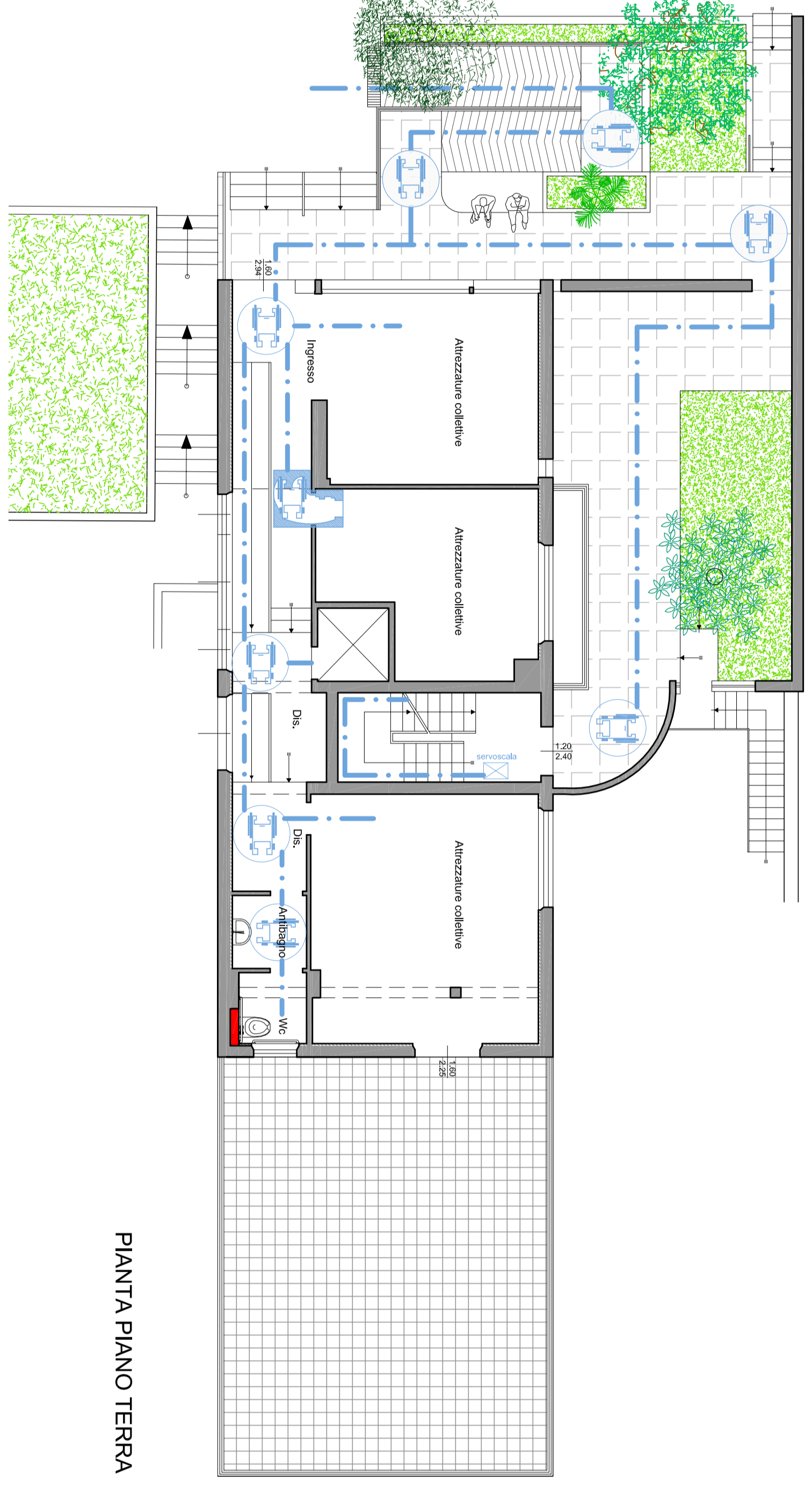
Coll. Prog.: Dott. Arch. Giovanni Coppola

LA PROPRIETÀ IL PROGETTISTA

EDIFICIO "A"

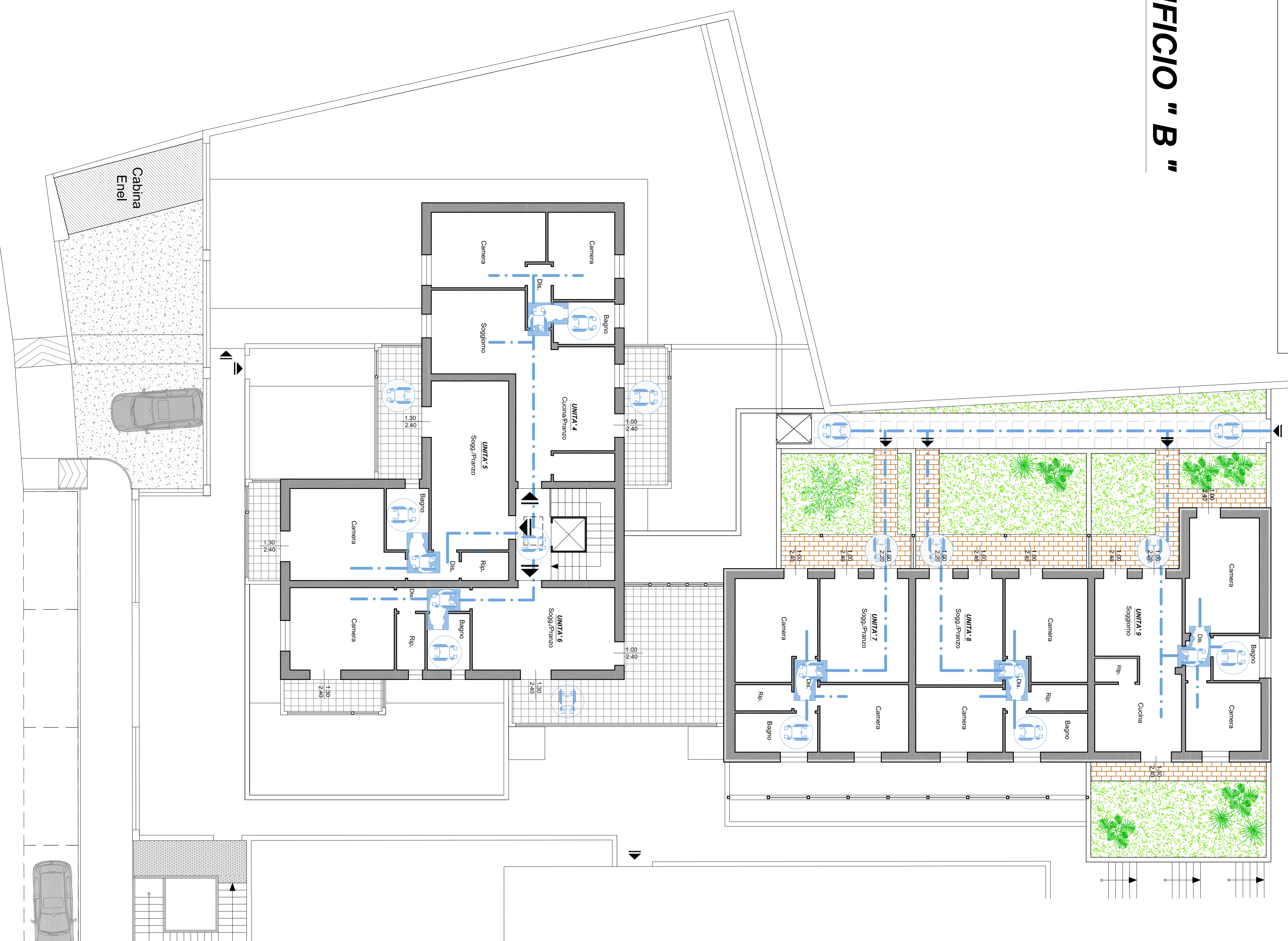


PIANTA PIANO SEMINTERRATO

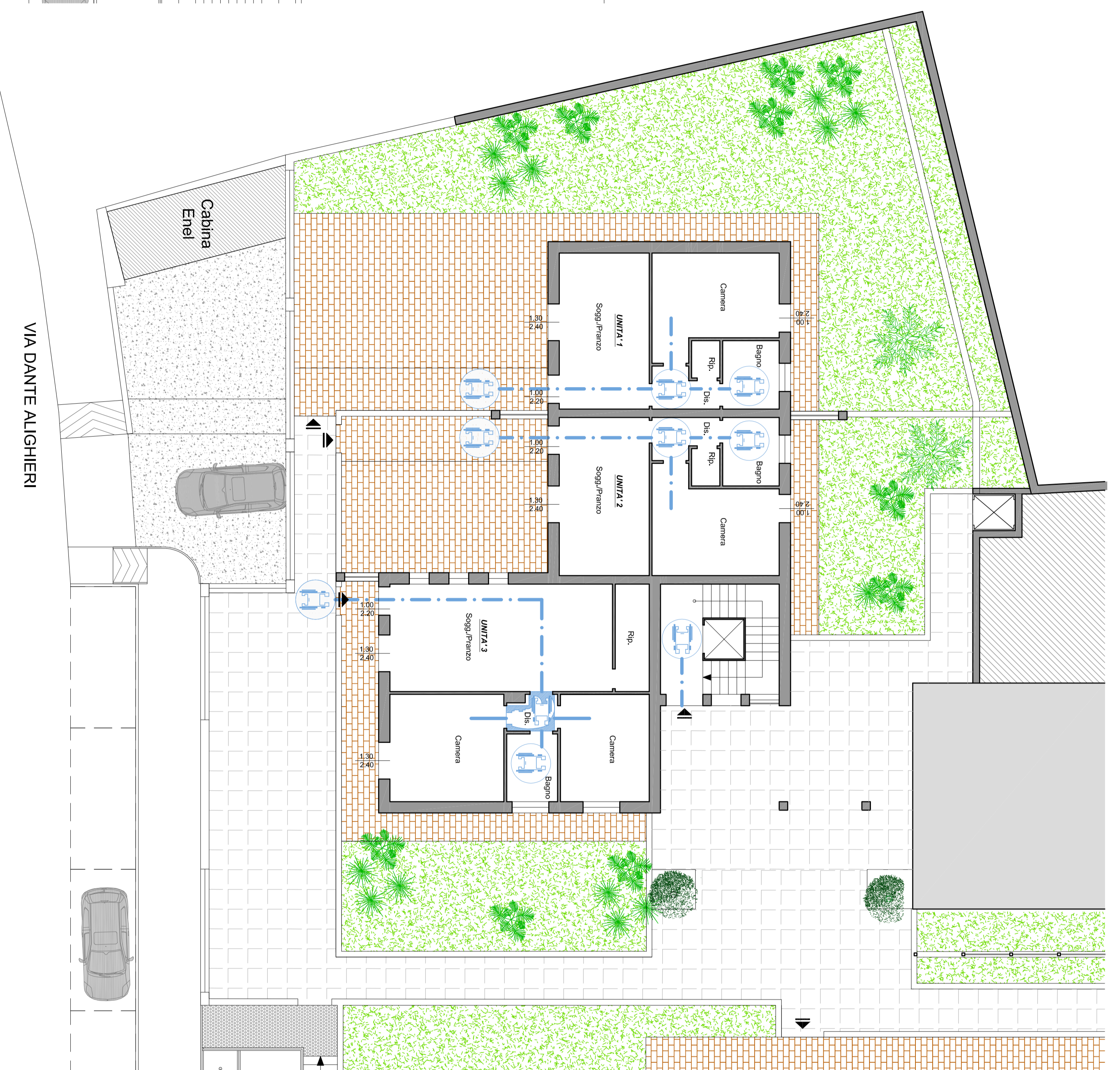


PIANTA PIANO TERRA

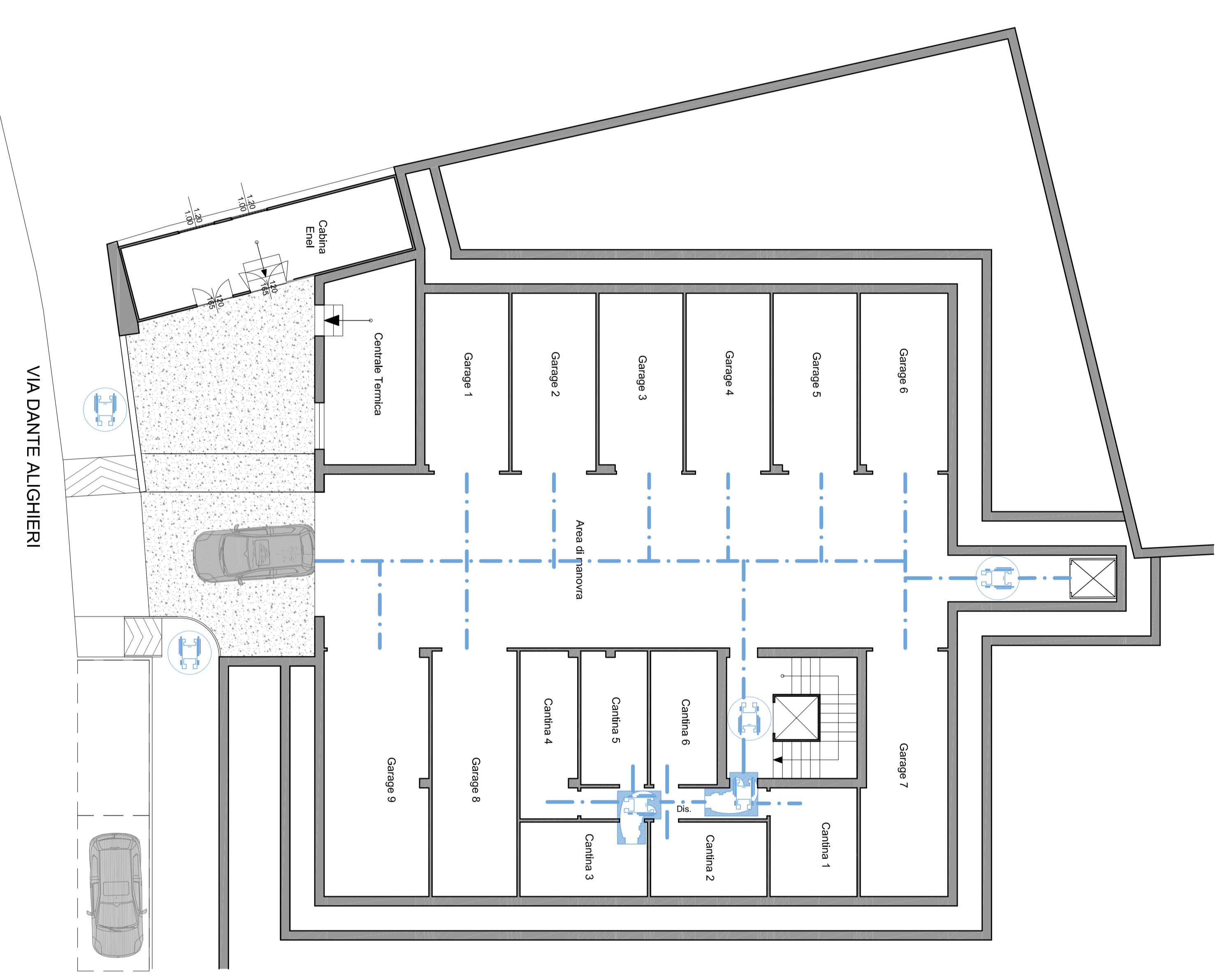
EDIFICIO "B"



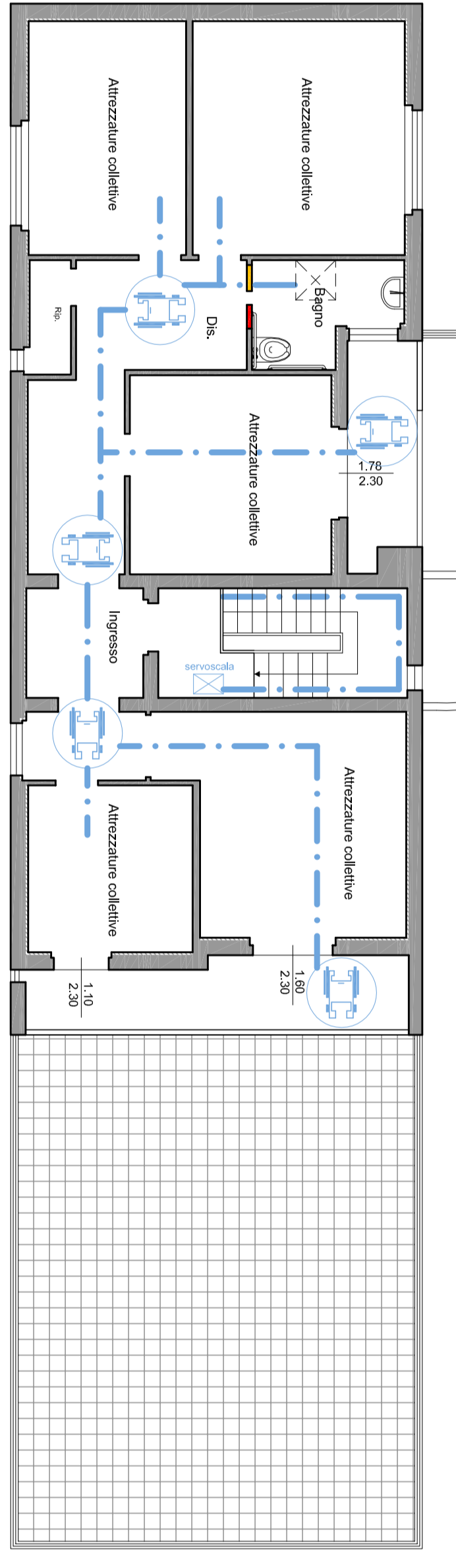
PIANTA PIANO PRIMO



PIANTA PIANO TERRA



PIANTA PIANO INTERRATO



PIANTA PIANO PRIMO

VIA DANTE ALIGHIERI

VIA DANTE ALIGHIERI

VIA DANTE ALIGHIERI